



**VAN CARE**



**B\_Line**

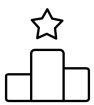
# ABOUT US

Van Care has been a leading manufacturer in the field of commercial vehicle Van Racking Kits for many years. Our head office is situated in Beek, The Netherlands & our production site is located in Poland, ensuring the highest standards of manufacturing. Together, we strive to deliver exceptional products that meet the diverse needs of our clients.

**Van Care offers solutions for every type of commercial vehicle.**

We work with lightweight modular equipment and provide tailor-made solutions. The modular construction allows you to put together your ideal interior with the exact shelves, drawers and spaces you need.

Thanks to an extensive network of specialized dealers, we can deliver fully customized Van Racking. Kits tailored specifically to your needs. Feel free to contact us for more information and an introductory conversation.



THE BEST  
QUALITY



FREE  
CONSULTANCY



COST REDUCTION

# SAFETY & QUALITY ARE OUR MAIN GOALS

## VAN CARE PRODUCTS

Van Care products are innovative, lightweight and durable. All products are made of ultra-high strength materials, resulting in minimal weight and maximum loading capacity.

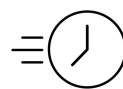
All Van Care's Van Racking Kits are tested extensively. Crash tests are continuously being carried out at specialized research centers.

Simulation, load capacity and vibration tests are continuously researched and performed.

Time and time again our products have proven to be extremely safe. Take these results from one of our frontal impact tests for example.

## PROVEN QUALITY OF OUR PRODUCTS

Van Care guarantees optimal safety, today and in the future. Everything is made for functional use and safety during work and transport. The production is fully certified and complies to ISO 9001:2015 and TÜV requirements.



TIME  
SAVING



PERSONALIZED  
PROJECTS



GREAT  
TESTS RESULTS



# ABOUT B\_LINE

This line provides a solid basis for an efficiently organized vehicle. The B-line is seen as the baseline in the field of Van Racking Kits.

The line is more affordable than our M-line, but with the same durability and functional capabilities. Thanks to the innovative design and the use of various high-quality materials, this system is an ideal installation system predominantly designed for Small & Medium Vans.

The various parts are made of high-quality steel and are finished with a powder coating layer.

Thanks to the type of steel used, this line is a very durable product line. The products are neatly finished for a sleek appearance.





# EFFORTLESS SELF-INSTALLATION

## COMPREHENSIVE INSTRUCTIONS

Each B\_line module comes with a detailed instruction manual to guide you through the assembly process step by step.

---

## INSTRUCTIONAL VIDEOS

We provide instructional videos to further simplify the installation, ensuring you have visual support at every stage.

---

## COLOR-CODED COMPONENTS

All components are marked with color-coded points, making it easy to identify and assemble each part correctly.

---

## USER-FRIENDLY DESIGN

Our modules are designed for easy self-installation, allowing you to set up your van efficiently and with confidence.

---

# OUR BASIC MODULES



## BM 950-3

75-3-050-00

Dimensions: 0507x360x980mm

Weight: 15,32kg

Distributed load per shelf: 40kg

Box qty: 1pcs

---



## BM 970-3

75-3-050-01

Dimensions: 0760x360x980mm

Weight: 18,3kg

Distributed load per shelf: 40kg

Box qty: 1pcs

---



## BM 910-3

75-3-050-02

Dimensions: 1014x360x980mm

Weight: 21,3kg

Distributed load per shelf: 40kg

Box qty: 1pcs

---



## BM 912-3

75-3-050-06

Dimensions: 1267x360x980mm

Weight: 25kg

Distributed load per shelf: 40kg

Box qty: 1pcs

---

## BM 950-23L

### 75-3-050-03

Dimensions: 0507x360x980mm  
Weight: 15,32kg  
Distributed load per shelf: 40kg  
Distributed load per drawer: 50kg  
Box qty: 1pcs

---



## BM 950-23K

### 75-3-050-04

Dimensions: 0760x360x980mm  
Weight: 18,3kg  
Distributed load per shelf: 40kg  
Distributed load per case: 15kg  
Box qty: 1pcs

---



## BM 910-13L

### 75-1-050-03

Dimensions: 1014x360x980mm  
Weight: 21,3kg  
Distributed load per shelf: 40kg  
Distributed load per drawer: 50kg  
Box qty: 2pcs

---



## BM 910-134

### 75-1-050-04

Dimensions: 1014x360x980mm  
Weight: 50,6kg  
Distributed load per shelf: 40kg  
Distributed load per drawer: 50kg  
Distributed load per case: 15kg  
Box qty: 3pcs

---



## BM 912-134

### 75-1-050-04

Dimensions: 1267x360x980mm  
Weight: 59,7kg  
Distributed load per shelf: 40kg  
Distributed load per drawer: 50kg  
Distributed load per case: 15kg  
Box qty: 3pcs

---



# OPTIONAL B\_LINE MODULE EXTENSIONS



## BM 950-1

75-1-050-00

Dimensions: 0507x260x345mm

Weight: 3,5kg

Distributed load per shelf: 40kg

Box qty: 1pcs

---



## BM 970-1

75-1-050-01

Dimensions: 0760x260x345mm

Weight: 4,3kg

Distributed load per shelf: 40kg

Box qty: 1pcs

---



## BM 910-1

75-1-050-02

Dimensions: 1014x260x345mm

Weight: 5,15kg

Distributed load per shelf: 40kg

Box qty: 1pcs

---



## BM 912-1

75-1-050-07

Dimensions: 1267x260x345mm

Weight: 5,9kg

Distributed load per shelf: 40kg

Box qty: 1pcs

---



## IT'S STACKABLE!

These extensions can be easily stacked to achieve your desired height, maximizing the storage capacity and ensuring an efficient use of space.



# ACCESSORIES



## BBS 1267.0360

75-3-007-03  
Weight: 3kg  
For 1267mm shelf  
Box qty: 1pcs

---



## BBS 1014.0360

75-3-007-02  
Weight: 2,07kg  
For 1014mm shelf  
Box qty: 1pcs

---



## BBS 0760.0360

75-3-007-01  
Weight: 1,6kg  
For 760mm shelf  
Box qty: 1pcs

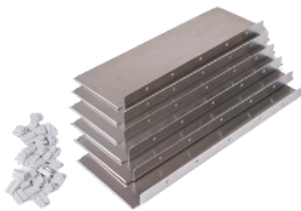
---



## BBS 0507.0360

75-3-007-00  
Weight: 1,13kg  
For 507mm shelf  
Box qty: 1pcs

---



## ADBP 0360

75-3-099-00  
DIVIDERS SET FOR  
DRAWERS  
Weight: 0,2kg  
Set: 6pcs dividers with mounting  
blocks

---



## ADBTTSP 0360

75-3-108-00  
DIVIDERS SET FOR SHELFs  
Weight: 0,2kg  
Set: 6pcs dividers with mounting  
blocks

---



## BAS

75-3-101-00 BAS05 507MM  
LENGTH  
75-3-102-00 BAS07 760MM  
LENGTH  
75-3-103-00 BAS10 1014MM  
LENGTH  
75-3-104-00 BAS12 1267MM  
LENGTH

---



# OPTIONAL B\_LINE HOLDERS



## BHR

75-0-040-00

**Holder for hoses**

Dimensions: 110x100x226mm

Weight: 0,3kg

---



## BSCH003

75-0-130-00

**Can holder (max 74mm)**

Dimensions: 165x271x115mm

Weight: 0,6kg

---



## BSKH004

75-0-150-00

**Can holder (max 54mm)**

Dimensions: 215x240x117mm

Weight: 0,7kg

---



# BAR WITH SLIDABLE CLAMB

**BFPC  
1014.360**

**Fixation Part  
for Cases**

75-3-110-12

Weight: 3kg  
For 1014mm shelf  
Box qty: 1pcs

---



**FIT FOR:**

BM 910-134

BM 910-13L



**BFPC  
1267.360**

**Fixation Part  
for Cases**

75-3-135-12

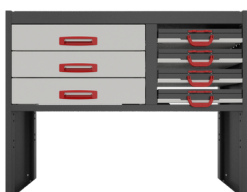
Weight: 3,4kg  
For 1267mm shelf  
Box qty: 1pcs

---



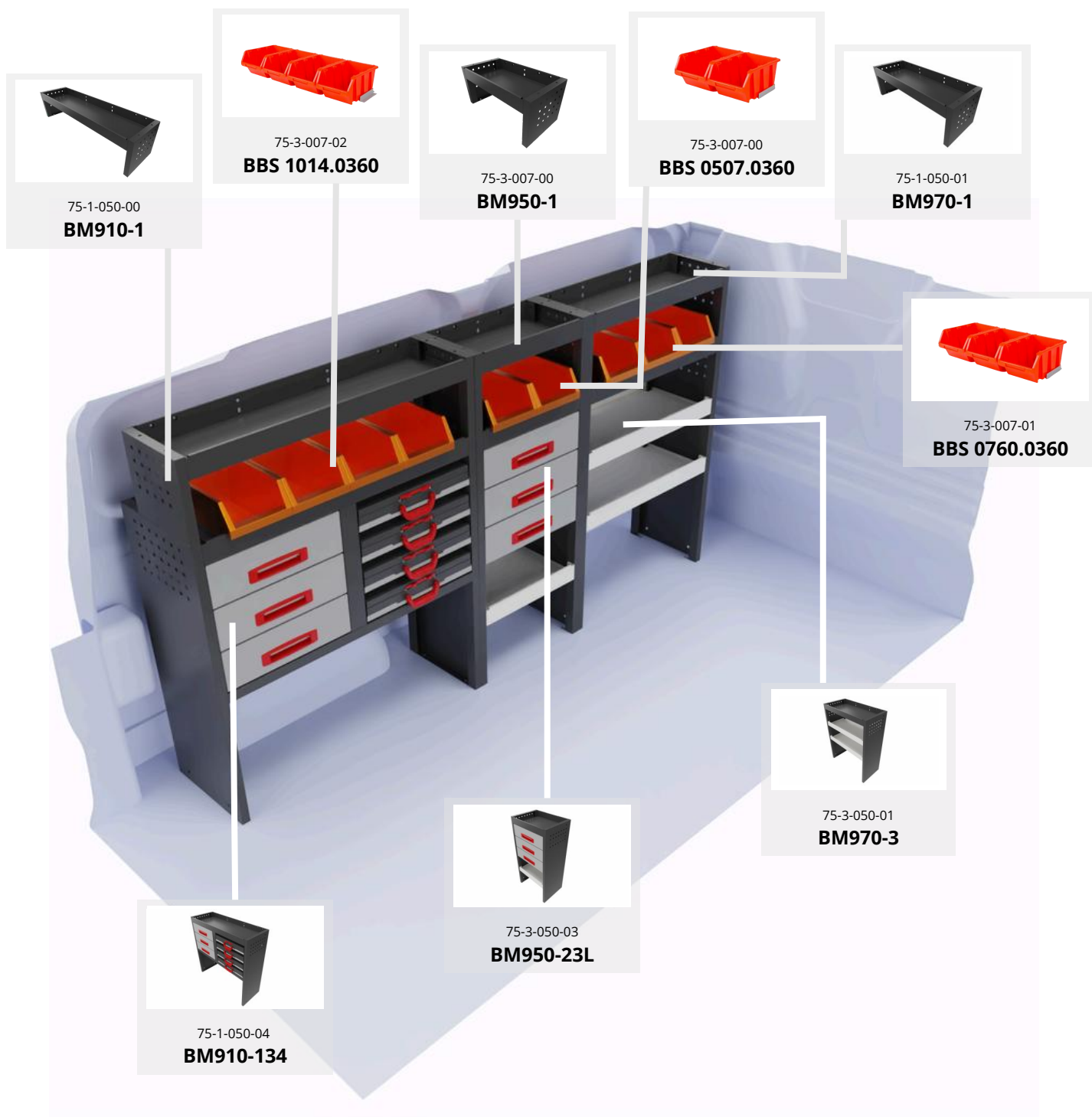
**FIT FOR:**

BM 912-134



# BUILD YOUR PERFECT KIT

B\_line modules are designed for easy integration and versatility. Each module can be seamlessly connected to another, allowing you to create a tailored storage solution that fits your specific needs. Every package includes a set of screws, ensuring you have everything required to effortlessly combine the modules. This straightforward assembly process ensures a secure and stable setup, giving you a reliable and customizable storage system.



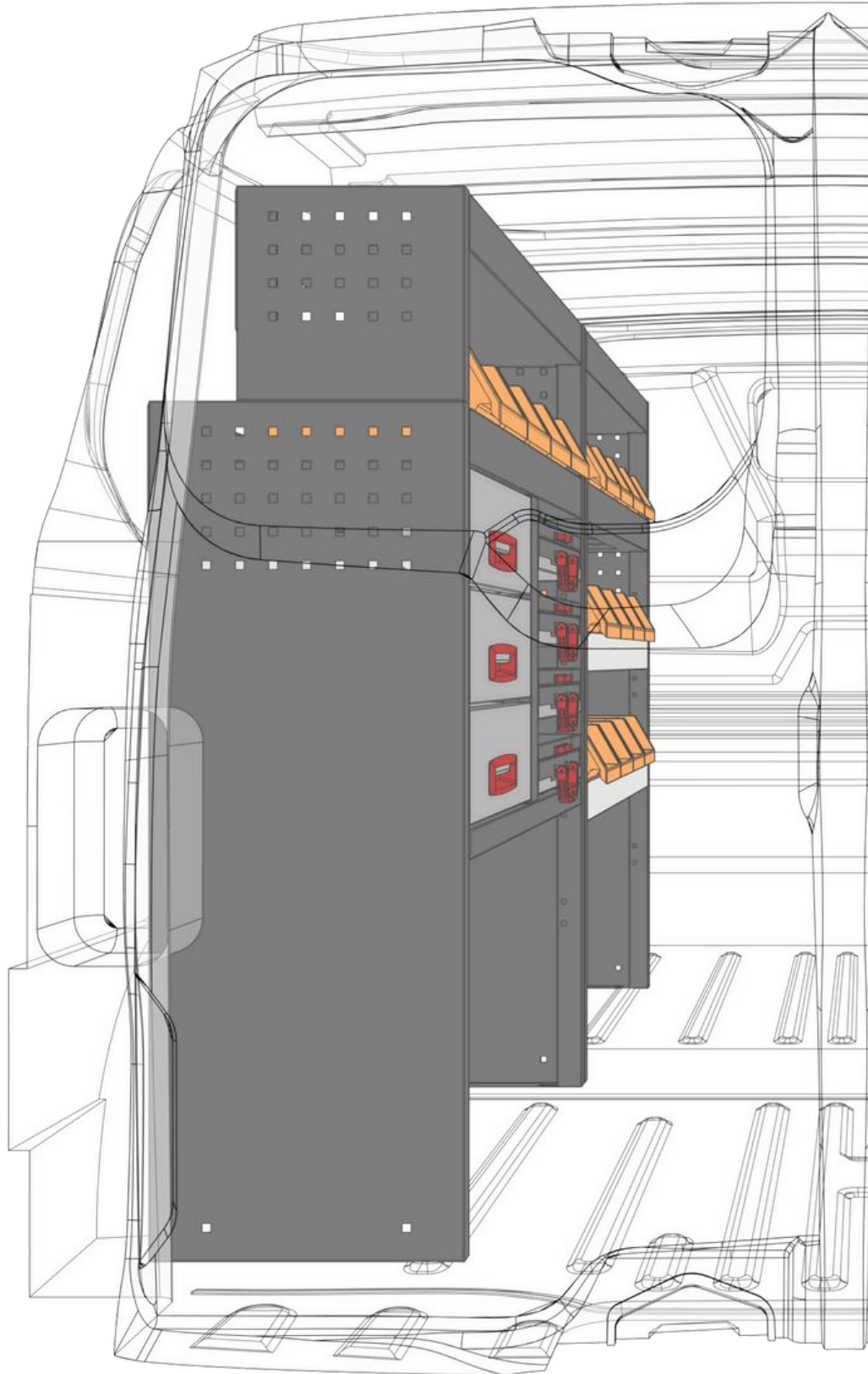
# EASY INSTALLATION GUARANTEED



**SCAN ME!**  
B\_line video tutorials

Assembling your dream van setup has never been easier with our B\_line video tutorials. Our step-by-step guides walk you through the entire process, ensuring a smooth and straightforward installation.

Whether you're a seasoned professional or a first-time installer, our videos provide clear instructions and helpful tips to help you achieve the perfect setup with ease.



To make the assembly process as simple as possible, we have minimized the need for tools. With just a few basic tools, you can easily install your B\_line modules.

You will need:

A power drill,

Two 13mm wrenches,

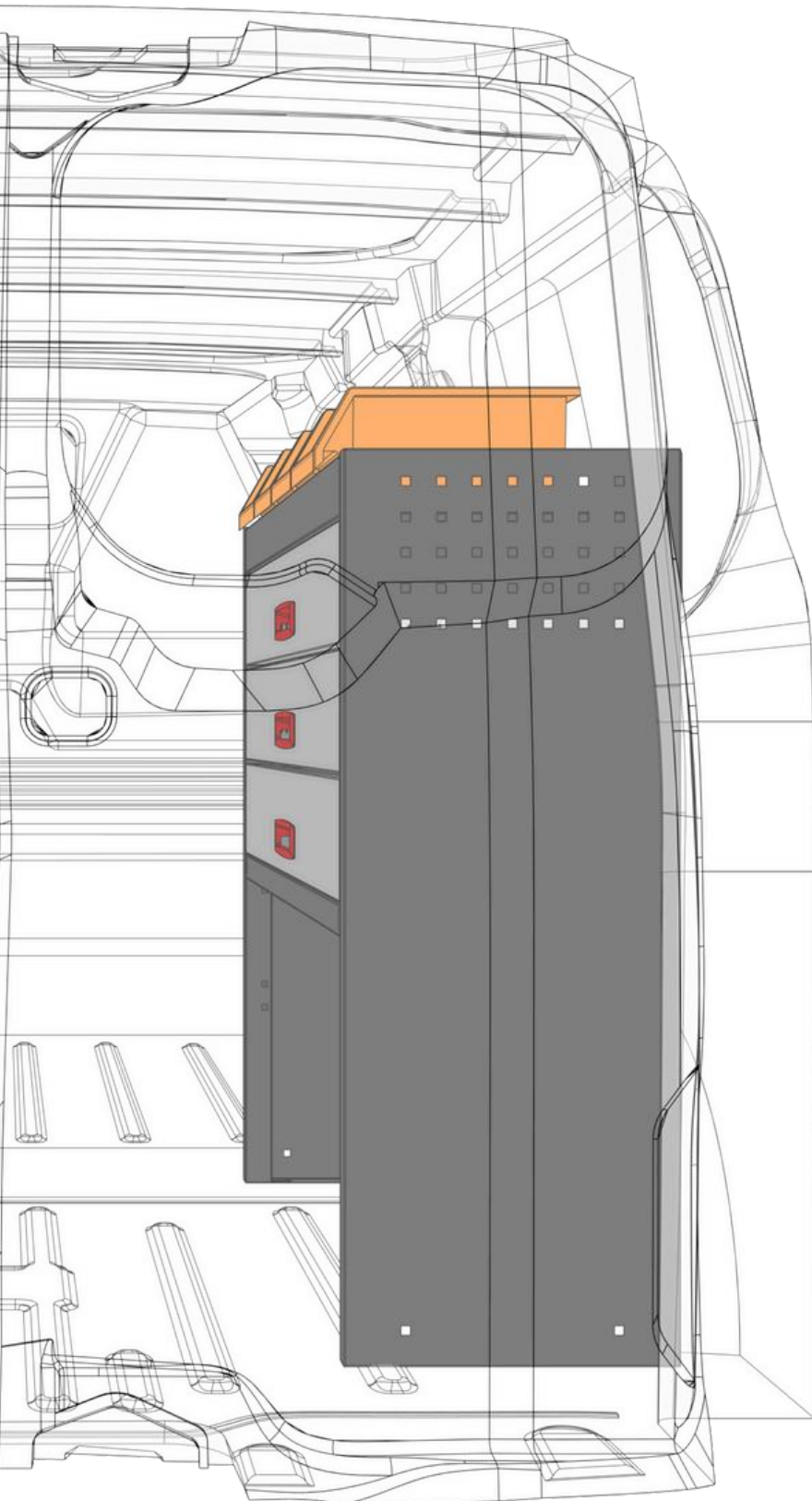
A 10mm drill bit,

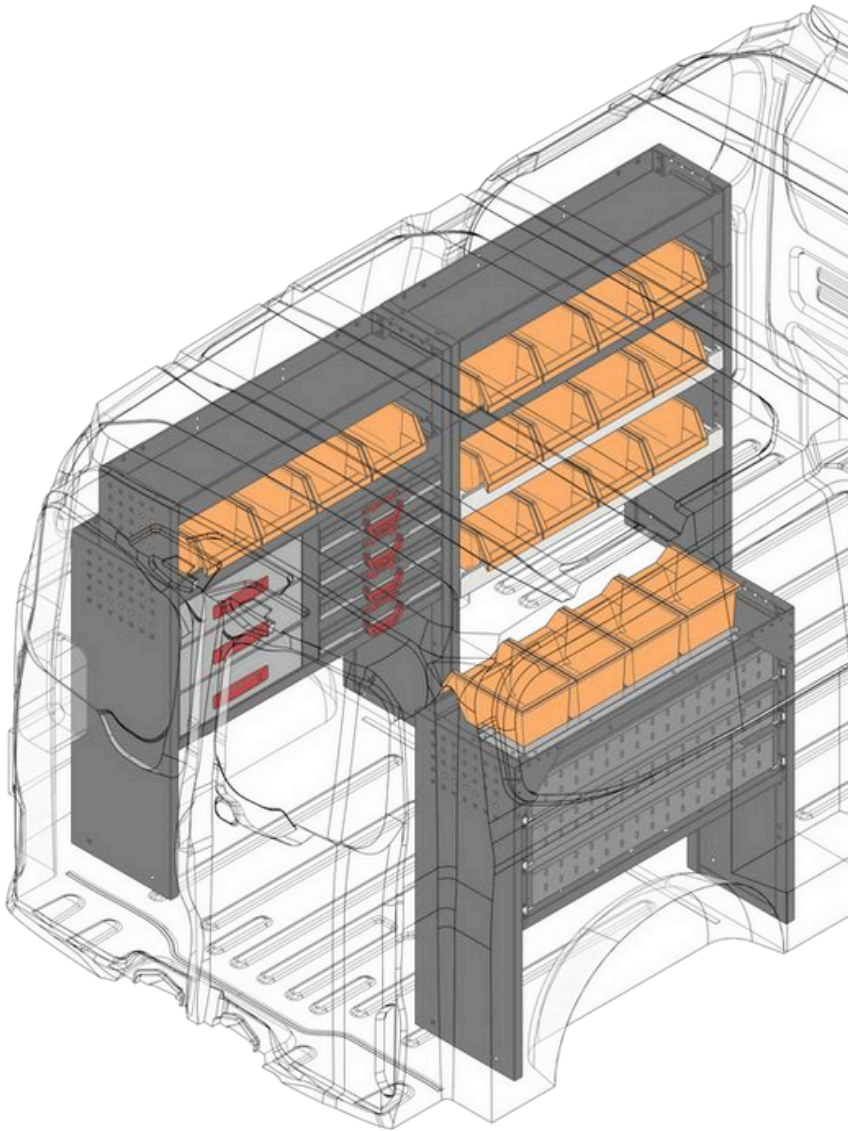
An 8mm Allen key.



**SCAN ME!**  
B\_line instruction

Every B\_line module comes with a detailed instruction manual and technical data sheet, ensuring you have all the information you need for a successful installation. Our comprehensive guides provide step-by-step directions, along with important specifications, to help you confidently assemble and integrate each module into your van setup. With clear and concise instructions, achieving a professional and functional layout is easier than ever.





Polychemstraat 14 6191NL Beek  
(Limburg) Netherlands  
Phone number: 0031 6 2952 3900  
[www.van-care.com](http://www.van-care.com)

B\_line January 2026